

- 88%
-
- : 10kV
- 0-10V
- (12Vdc 200 mA)
-
- IP66
- SELV
- Class II
-



EUC-042S070DDM(SDM) 42W IP66 90-305 Vac

	1			2			
					120Vac	220Vac	
700 mA	90 ~ 305 Vac 127~ 250 Vdc	28~56 Vdc	39 W	88%	0.98	0.95	EUC-042S070DDM(SDM)

1 100-240Vac 127-250Vdc (KS)
 2 220 Vac 100%

	90 Vac	-	305 Vac	127~250 Vdc
	47 Hz	-	63 Hz	
	-	-	0.70 mA	IEC60598-1; 240Vac/ 60Hz
	-	-	0.66 A	100% 100Vac.
	-	-	0.3 A	100% 220Vac
(I ² t)	-	-	0.53 A ² s	220Vac 25°C 10%Ipk- 10%Ipk = 264 μs
	0.90	-	-	100- 240Vac 50-60Hz ,75%~ 100%
	-	-	20%	(29.25-39W)

	-5%lo	-	5%lo	100%
(pk-pk)	-	-	120%lo	100% 20 MHz BW
< 200 Hz (pk-pk)	-	-	120%lo	100%
	-	5%lo	10%lo	100%
	-	-	61 V	
	-	-	±0.5%	100%
	-	-	±1.5%	
	-	-	1.0 s	120Vac 75%~100%
	-	-	0.6 s	220Vac 75%~100%
	-	0.03%/°C	-	= 0°C ~Tc
12V	10.8 V	12 V	13.2 V	
12V	0 mA	-	200 mA	" Dim - "

Cree XLamp XP-G 25

@120 Vac	86.5%	87.5%	-	100% 25° 2%
@220 Vac	87.0%	88.0%	-	100% 25° 2%
@277 Vac	86.0%	87.0%	-	100% 25° 2%
	-	582,000 Hours	-	220Vac 25°C 80% (MIL-HDBK-217F)
	-	80,000 Hours	-	120Vac 80% 70°C
	-40°C	-	+90°C	
	-40°C	-	+75°C	: 10% RH to 100% RH
	-40°C	-	+85°C	: 5% RH to 100% RH
(L x W x H)	4.49 x 2.66 x 1.44			5.32 x 2.66 x 1.44
(L x W x H)	114 x 67.5 x 36.5			135 x 67.5 x 36.5
	-	580 g	-	

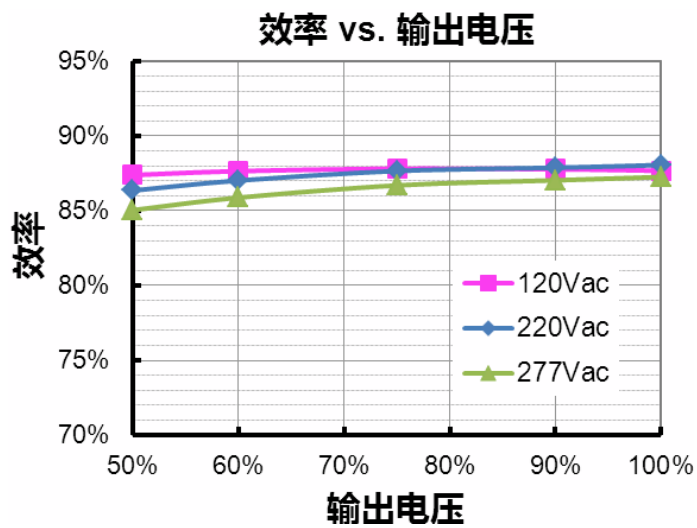
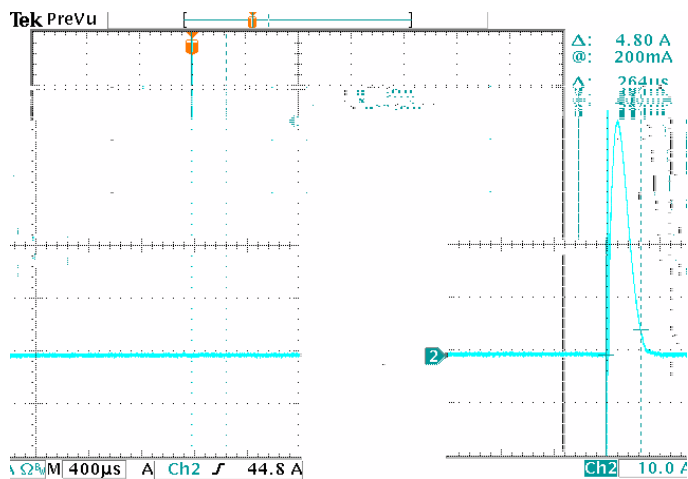
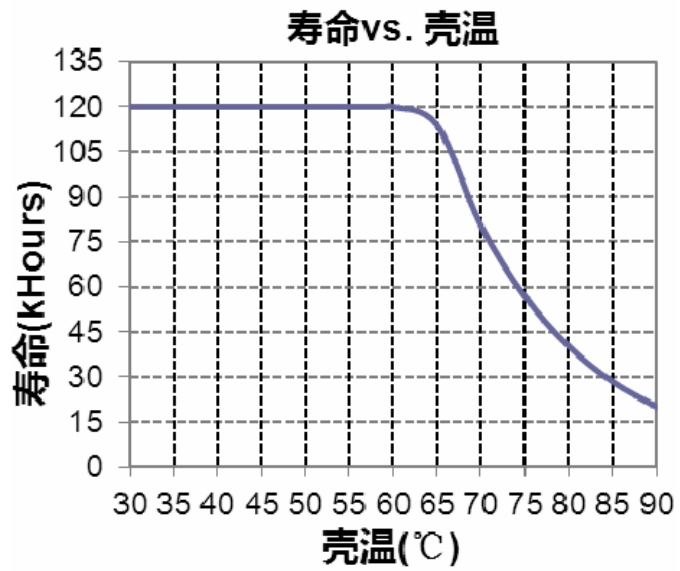
Cree XLamp XP-G 25

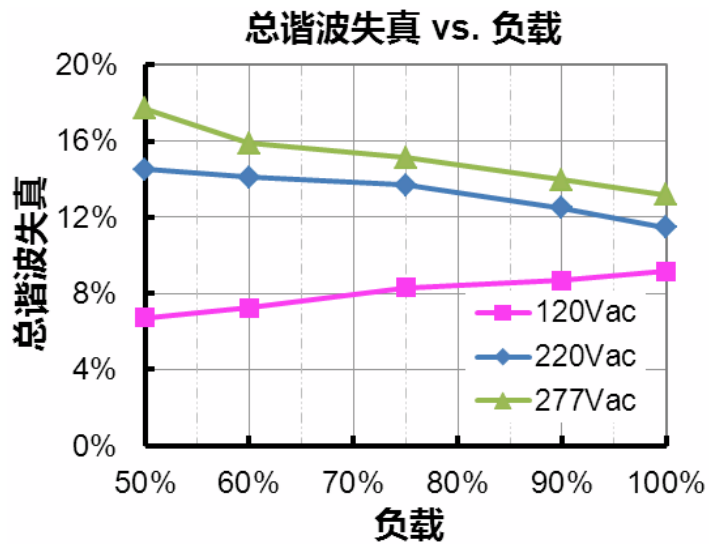
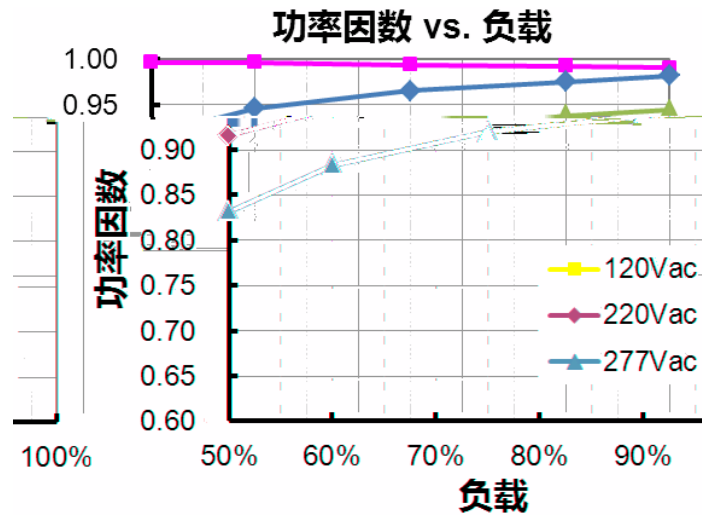
0~ 10V	-20 V	-	20 V	
0~ 10V	0 μA	200 μA	250μA	
	10%Io	-	100%Io	
	0 V	-	10 V	

ENEC & TUV & CE	EN 61347-1, EN61347-2-13
CB	IEC 61347-1, IEC 61347-2-13
KS	KS C 7655
EMI	
EN 55015 ⁽¹⁾	Conducted emission Test & Radiated emission Test
EN 61000-3-2	Harmonic current emissions
EN 61000-3-3	Voltage fluctuations & flicker
EMS	
EN 61000-4-2	Electrostatic Discharge(ESD): 8kV air discharge, 4kV contact discharge
EN 61000-4-3	Radio-Frequency Electromagnetic Field Susceptibility Test-RS
EN 61000-4-4	Electrical Fast Transient/Burst-EFT
EN 61000-4-5	Surge Immunity Test: AC Power Line: Differential Mode 10 kV
EN 61000-4-6	Conducted Radio Frequency Disturbances test-CS
EN 61000-4-8	Power Frequency Magnetic Field Test
EN 61000-4-11	Voltage Dips
EN 61547	Electromagnetic Immunity Requirements Applies To Lighting Equipment

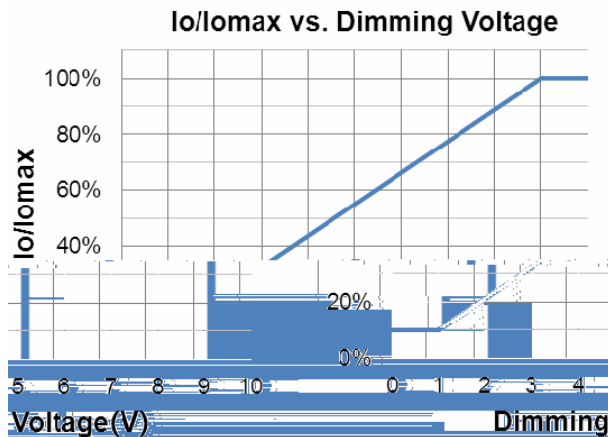
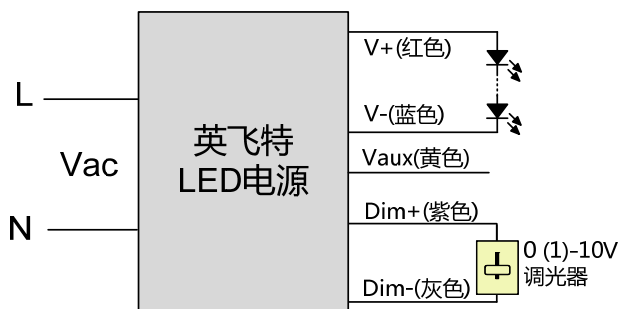
1 EMI

() EMI

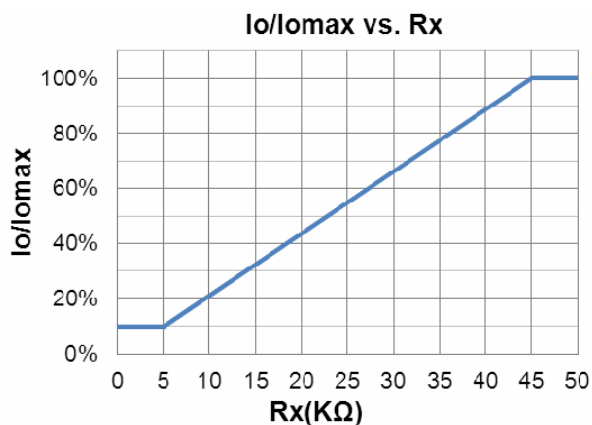
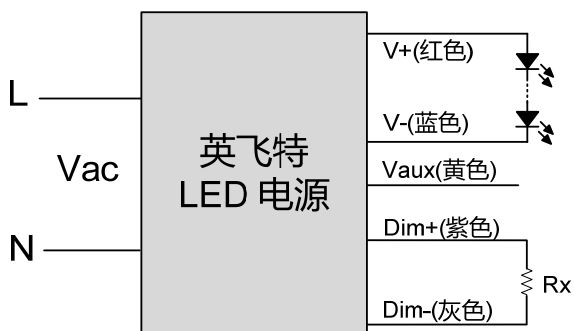




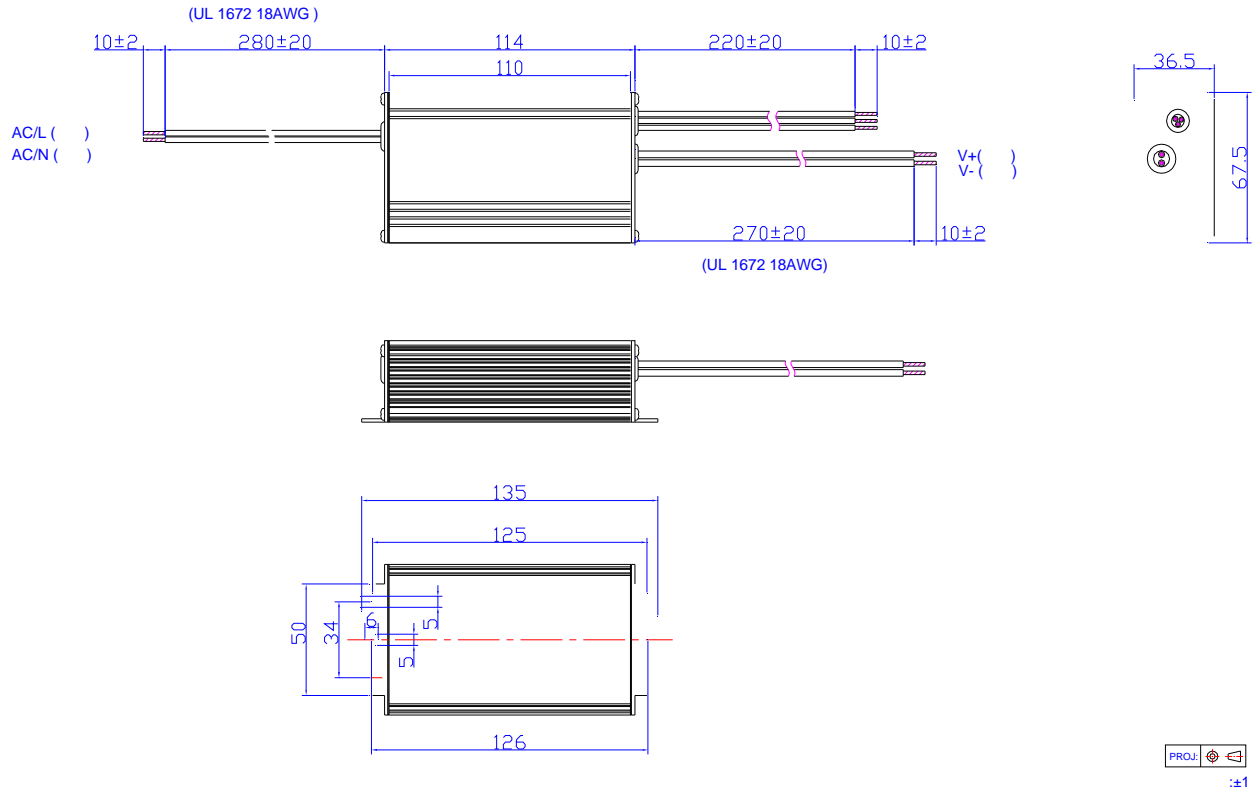
● 0-10V



1: DC



EUC-042S070DDM



RoHS

RoHS 2011/65/EU

EU 2015/863

2015-06-30	A		/	/
2016-04-18	B		500 g	580 g
		0~ 10V	220 uA	250 uA
		KS	/	
		EMI	/	
2019-08-21	C	TUV	/	
		ENEC	/	
			1	
		/	/	
			TUV	
			CB	
			KS	
			EN 61000-4-5	
			/	
	RoHS	/		